



Tampere Summer School

Architecture, Varying Topics: Approaching Pattern Language - Tampere Summer School 2021

○ Tampere University

Get to know us

Information about studies

Extent

2 ECTS

Application period

1/4/2021 - 7/6/2021

Fees

0-210 euros

City

Online course

Study fields

Construction

Architecture, Varying Topics: Approaching Pattern Language



Description



The course introduces “A Pattern Language”, a classical reading in the fields of design and urban planning, written by Christopher Alexander, Sara Ishikawa and Murray Silverstein. The pattern language theory will be approached from the point of view of urban planning and reflected to the everyday environments of today we live in. As course assignments, the students will produce small presentations, studying their own urban surroundings and reflecting them to the theory.

Contents



After attending the course, the student will have a basic perception on “A Pattern Language”. The course will give the student an idea about how theory can be applied into planning and design, and encourage the student to view the built environment from a planner’s point of view.

Course dates



The Teaching Timetable 2021 can be found [here](#).

Please remember to check the course specific timetable within your [time zone](#).

Teaching



An online course using the Moodle platform for distributing the course material and for written communication. The sessions are held in Teams.

To be able to participate in the remote learning environment, you will need a fully functional device (laptop, PC, tablet) with the following functions:

- stable internet connection
- camera and microphone
- installation rights & compatibility with our learning softwares (Zoom, Moodle, etc.)

Prerequisites



Use of Microsoft Office environment.

Teaching material



Alexander, Christopher; Ishikawa, Sara; Silverstein, Murray; A Pattern Language which generations multi-service centers (partitions).

Assessment methods



Participation in online teaching sessions, submitting course assignments and presenting them.

Evaluation scale: pass/fail

Teacher(s)



[Mari-Sohvi Miettinen](#)

Additional information



In questions concerning course content, please contact teacher Mari-Sohvi Miettinen, mari-sohvi.miettinen@tuni.fi.

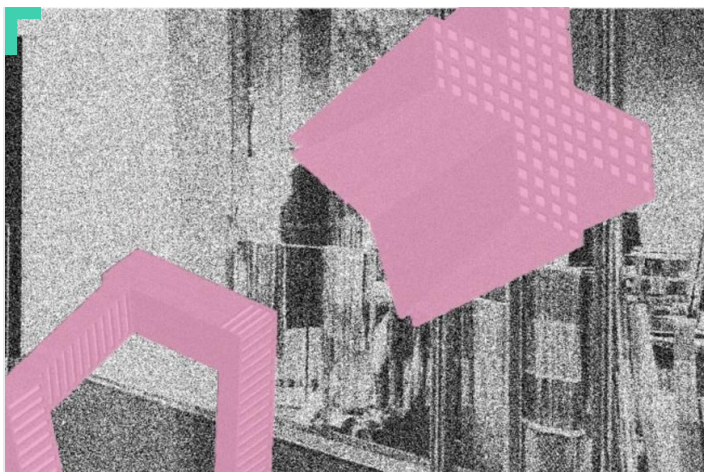
Additional information



In questions concerning course content, please contact teacher Mari-Sohvi Miettinen, mari-sohvi.miettinen@tuni.fi.



Your last viewed study options

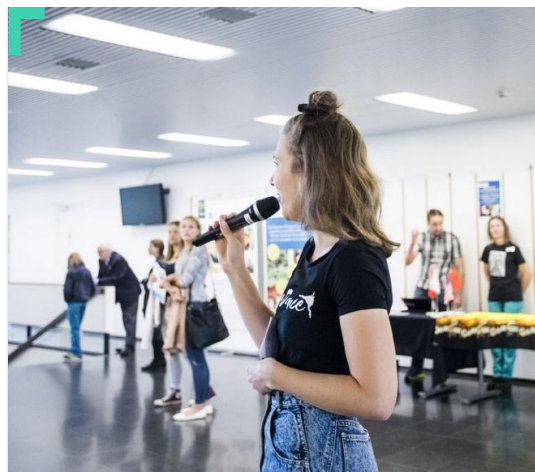


Study module - non degree

○ Tampere University

Architecture, Varying Topics: Approaching Pattern Language - Tampere Summer School 2021

Type: Tampere Summer School •
Extent: 2 ECTS • City: Online course



Study module - non degree

● Tampere University of Applied Sci

The Art of Public Speaking Tampere Summer School 2021

Type: Tampere Summer School •
Extent: 3 ECTS • City: Online course